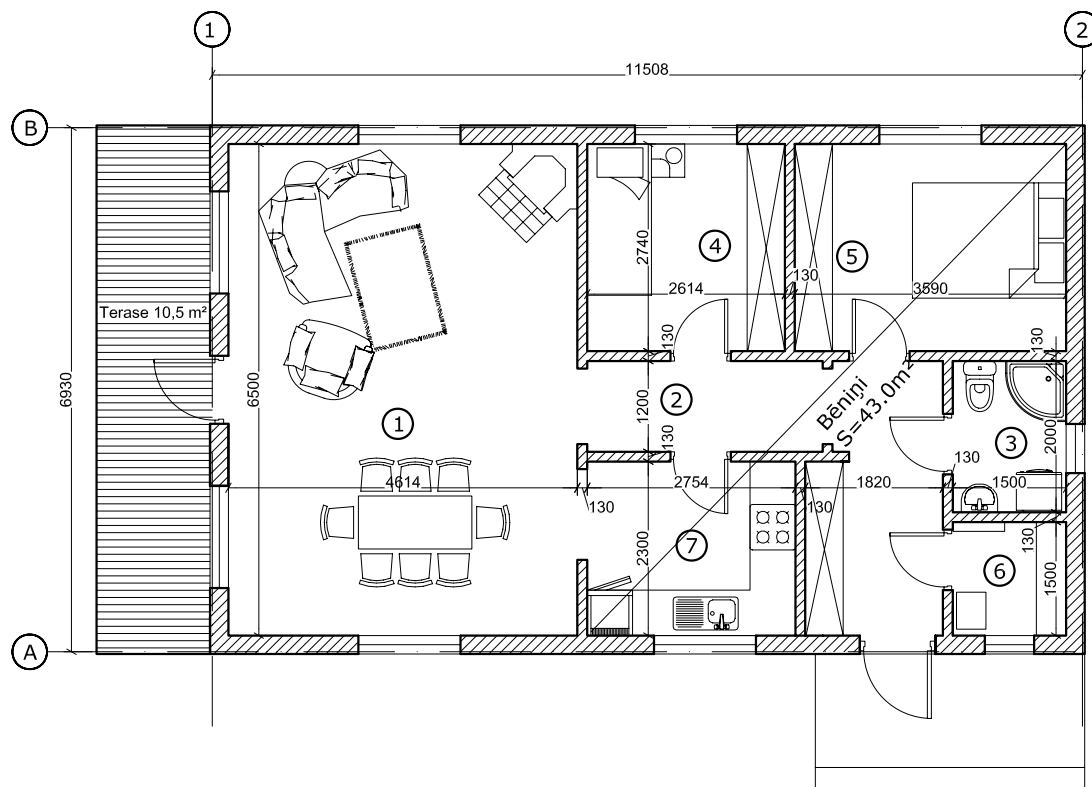


TO 70.00

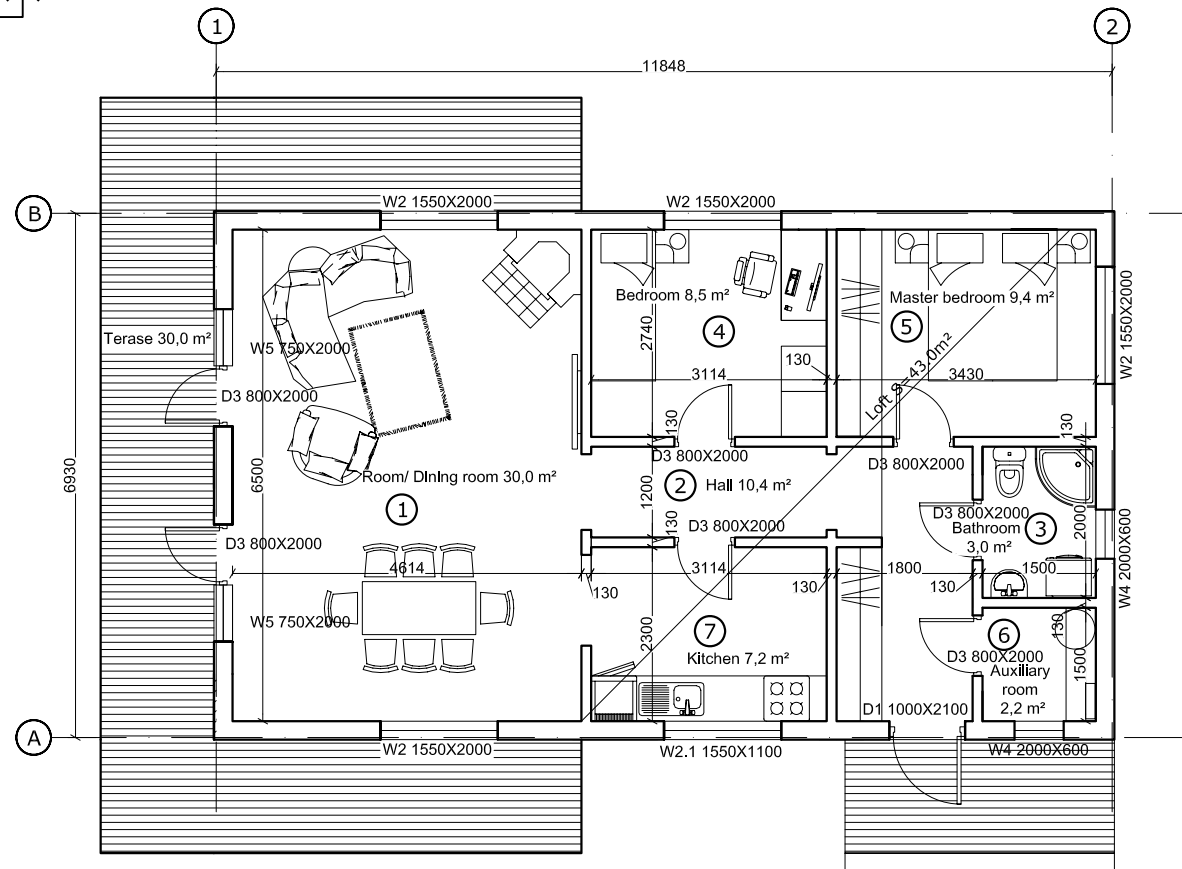
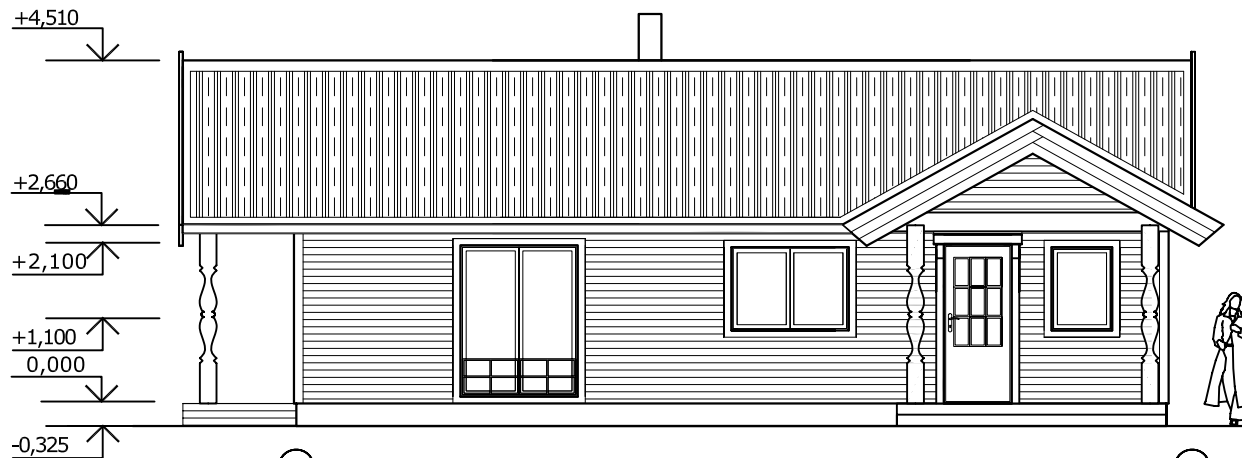


1. STĀVA EKSPLIKĀCIJA

TELPAS Nr.	TELPAS NOSAUKUMS	m ²
1	ĒDAMISTABA / VIESU ISTABA	30.00
2	KORIDORS	12.00
3	SAN. MEZGLS	3.00
4	GUĻAMISTABA	7.10
5	GUĻAMISTABA	9.50
6	NOLIKTAVA	2.20
7	VIRTUVE	6.20

KOPĀ: 70.00

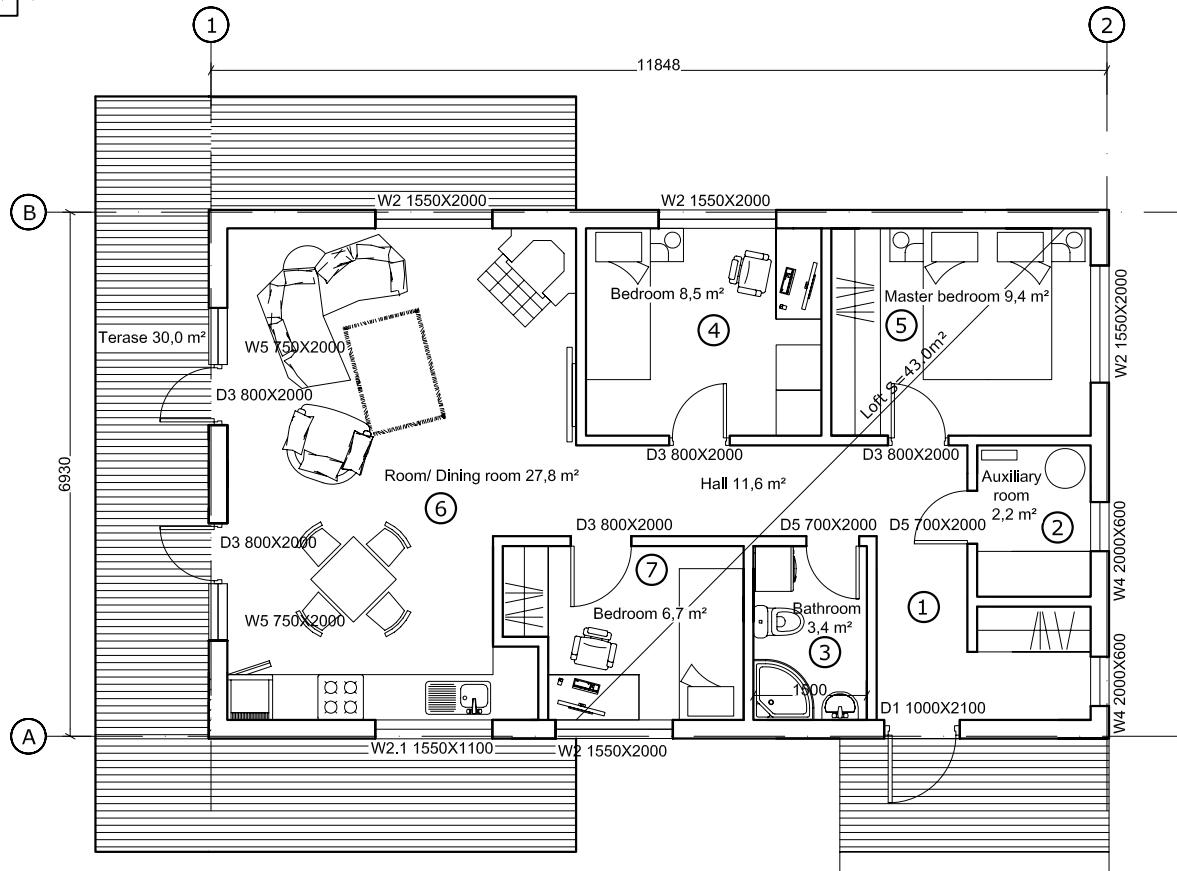
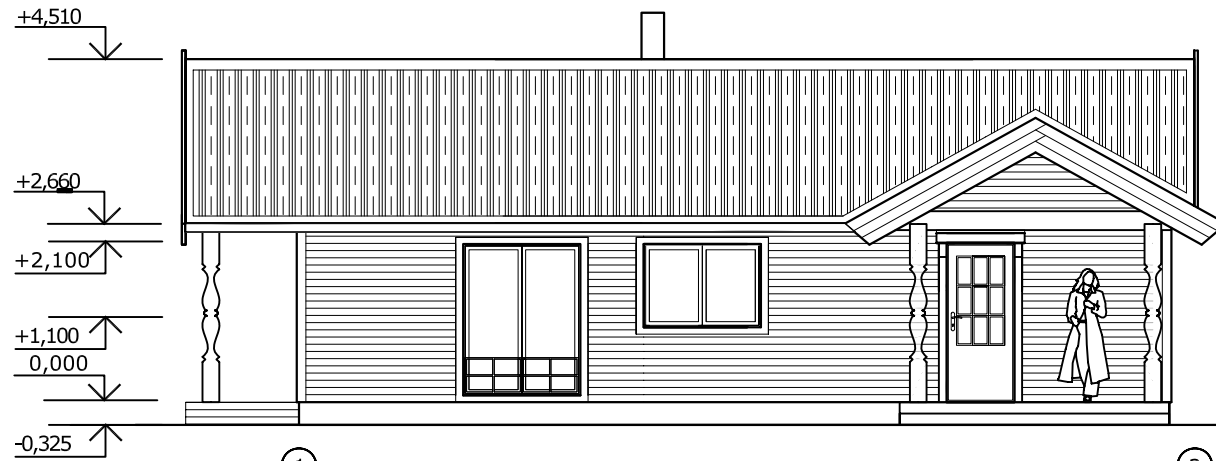
A detailed architectural line drawing of a small, single-story wooden house. The house features a steep gabled roof with a central vertical support post. A tall, thin chimney is located on the left side of the roof. The exterior walls are clad in horizontal wooden siding. The front facade has a central entrance with a double door, flanked by two windows, each also with double doors. The entrance is sheltered by a small porch supported by four decorative, carved wooden posts. The house is shown from a front-facing perspective, with a simple horizontal line representing the ground level.



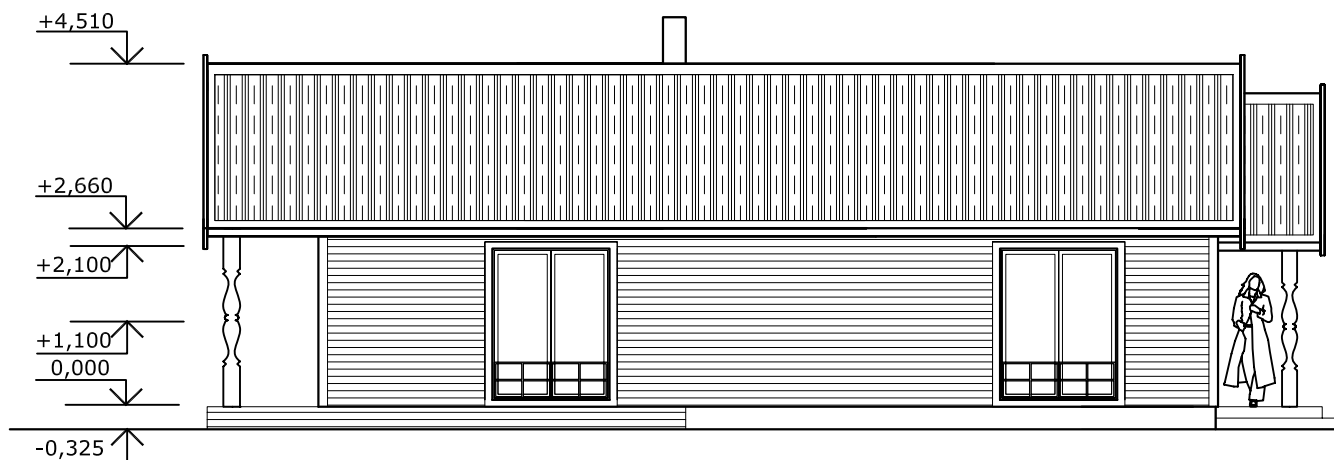
GROUND FLOOR PLAN

Inner area 70,7 m²
Outer area 30,0 m²

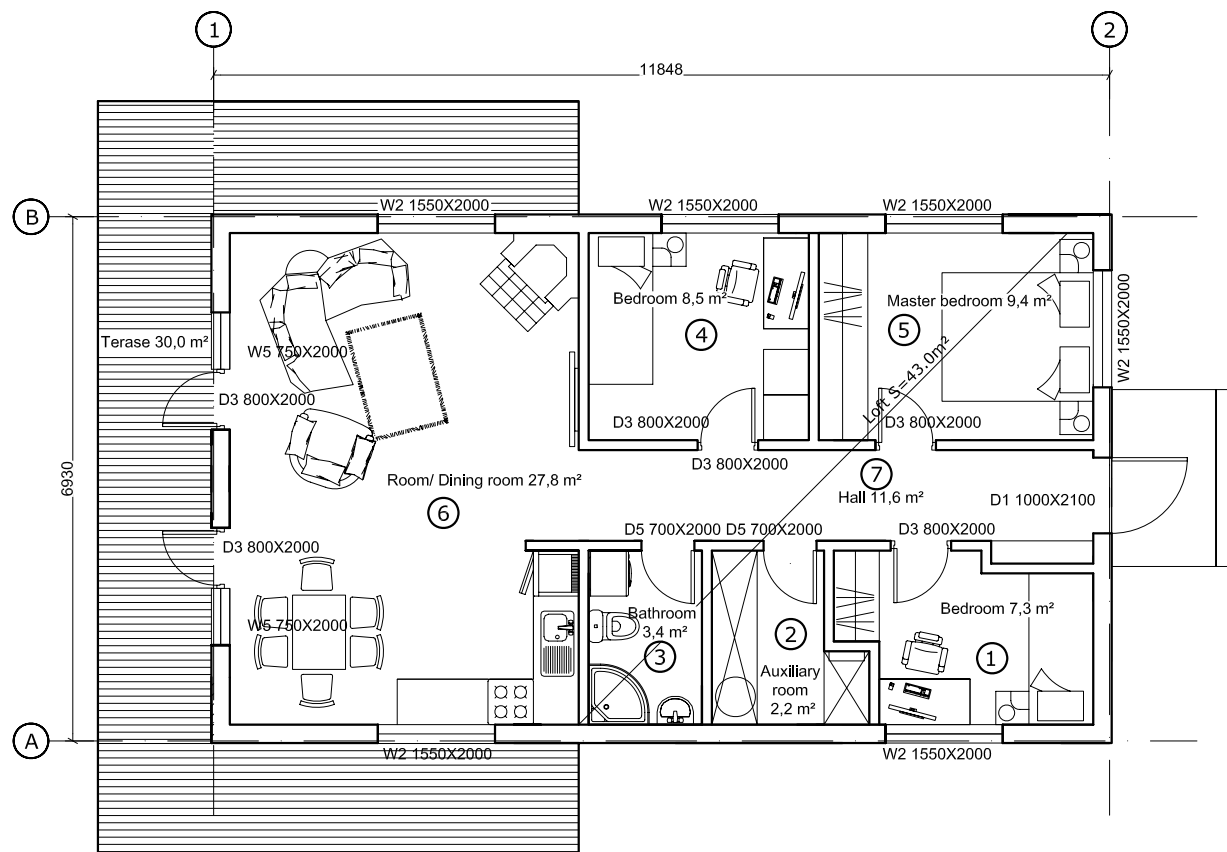
A line drawing of a small, single-story house with a gabled roof. A chimney is located on the left side of the roof. The front facade features a porch with four decorative columns. The house has horizontal siding and a central double door. The roof is supported by a central vertical post and two side posts. There are four small circles on the roof slope, possibly representing ventilation or decorative elements. The house is shown from a front-facing perspective, sitting on a flat ground line.



Inner area 69,6 m²
Outer area 30,0 m²

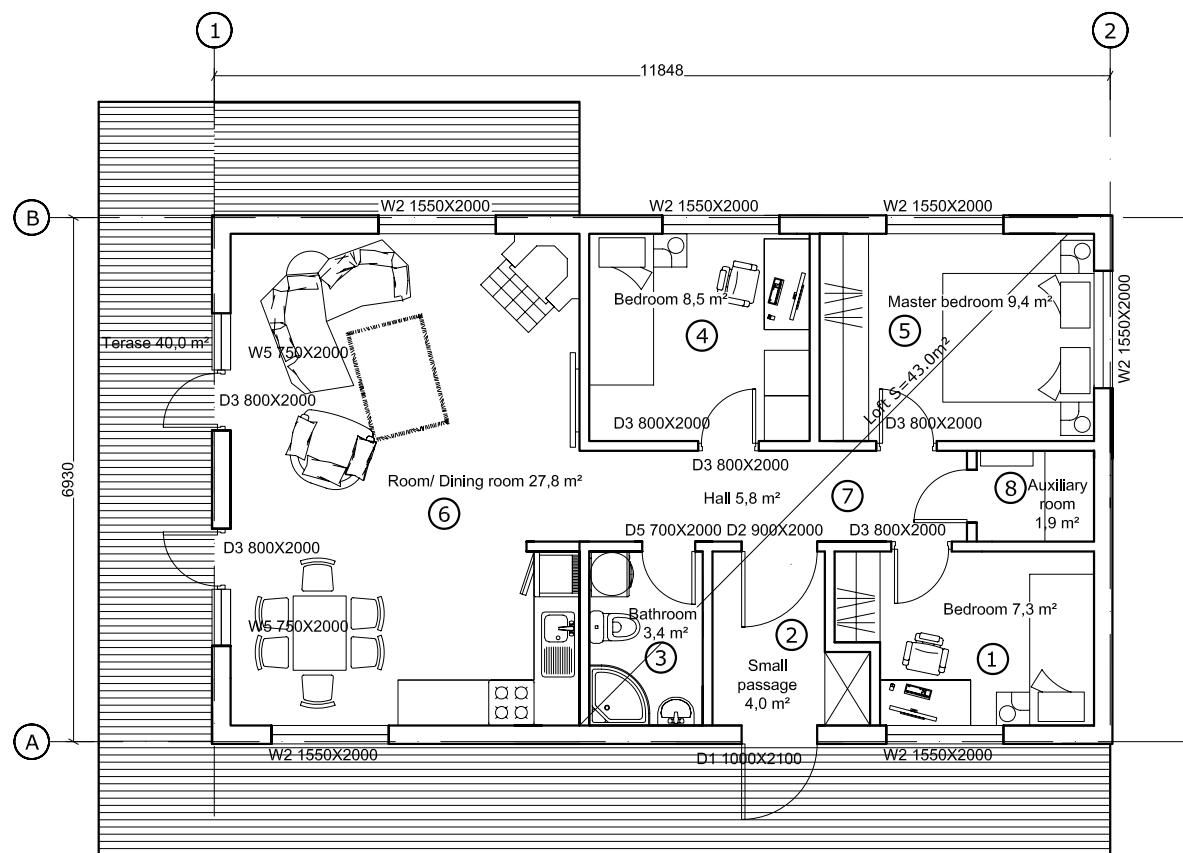


TO 70.3



GROUND FLOOR PLAN

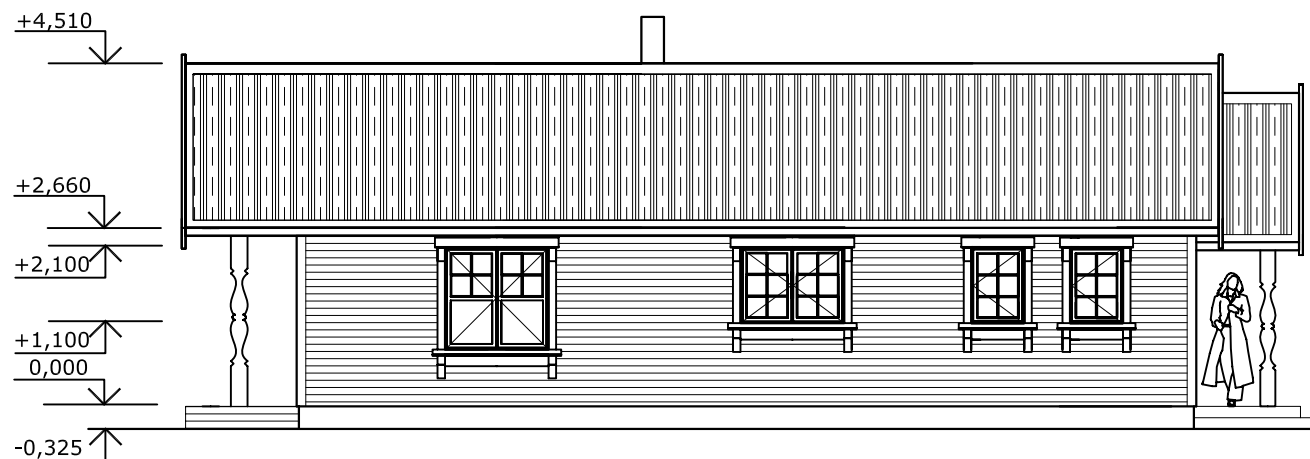
Inner area 70,2 m²
Outer area 30,0 m²



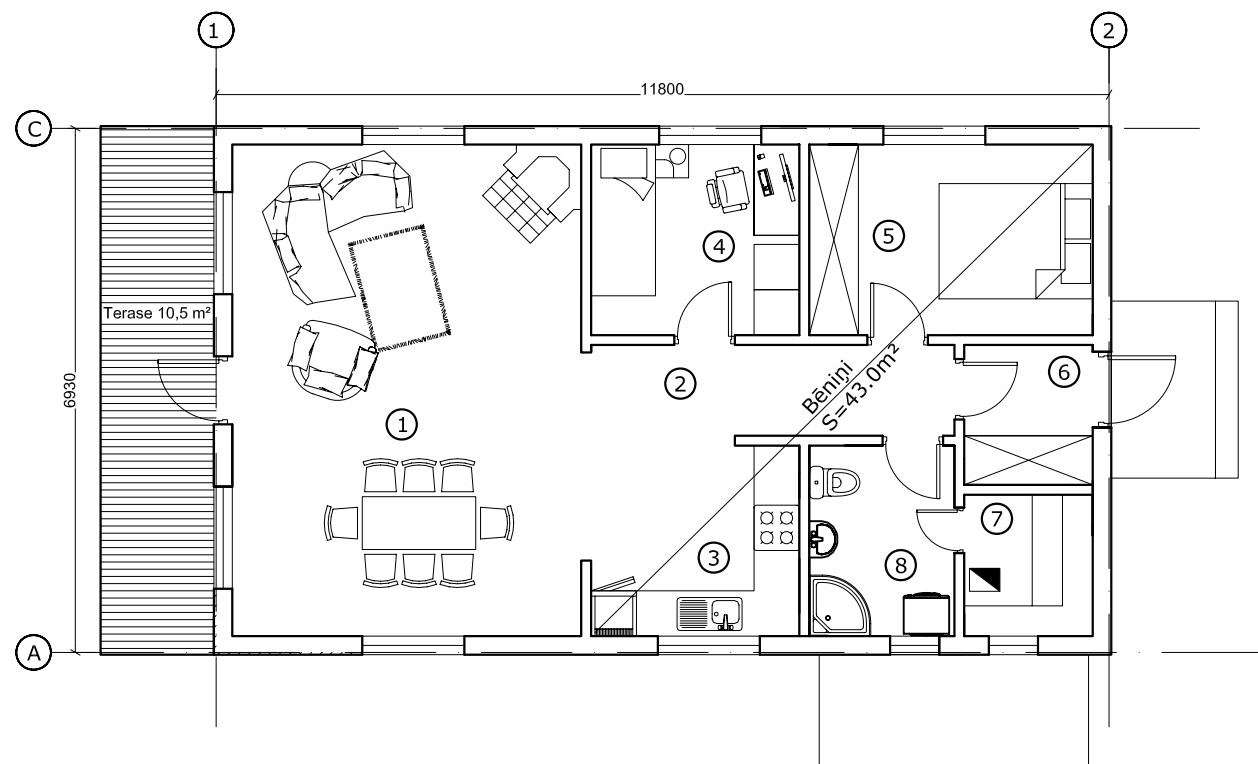
GROUND FLOOR PLAN

Inner area 68,1 m²
Outer area 40,0 m²

TO 70.75



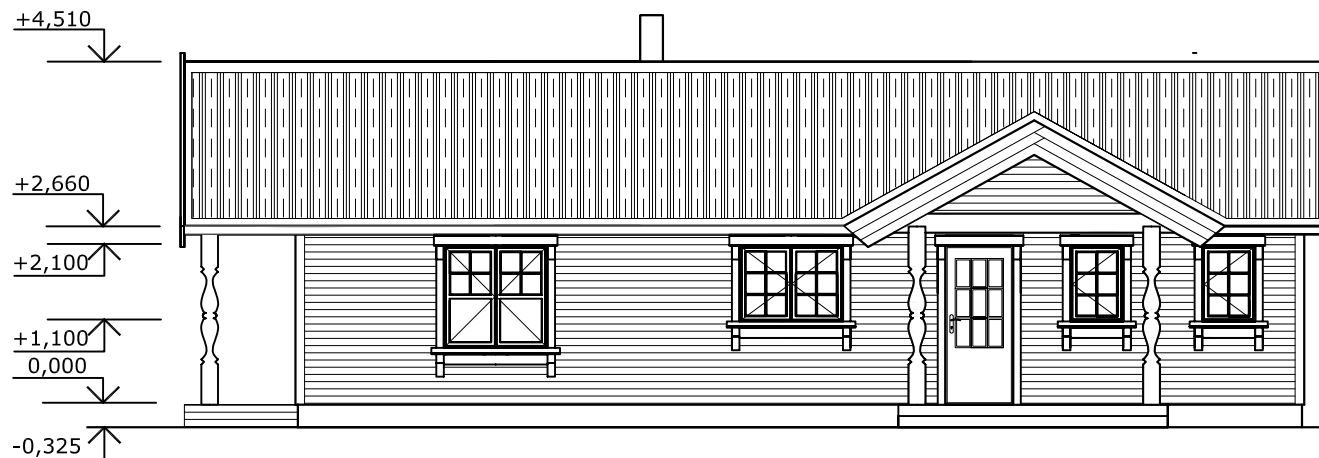
1. STĀVA EKSPLIKĀCIJA



TELPAS Nr.	TELPAS NOSAUKUMS	m ²
1	ĒDAMISTABA / VIESU ISTABA	30.00
2	KORIDORS	6.30
3	VIRTUVE	7.00
4	GUĻAMISTABA	6.90
5	GUĻAMISTABA	9.50
6	VĒJTVERIS	3.95
7	SAUNA	6.20
8	SAN. MEZGLS	4.85

KOPĀ: 74.70

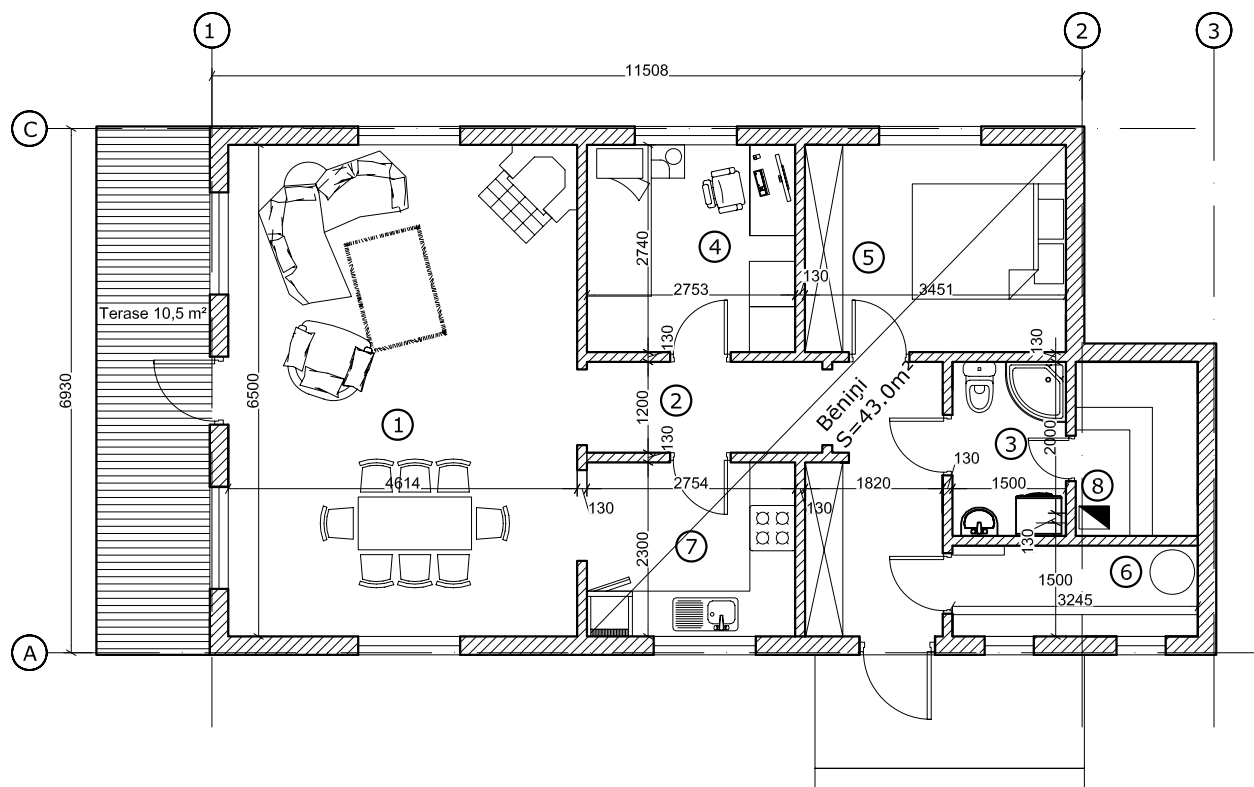
TO 70.76



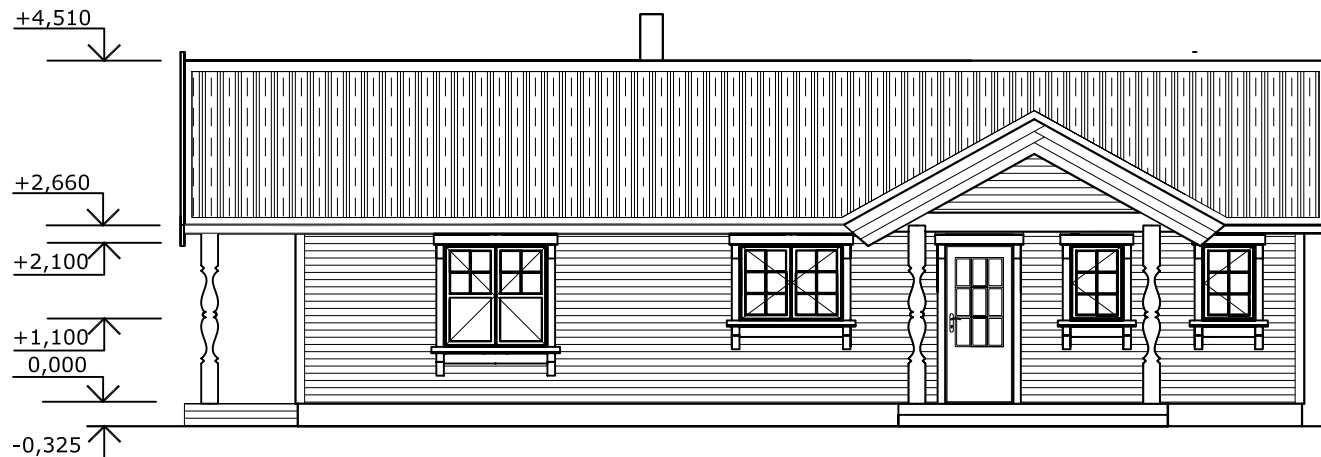
1. STĀVA EKSPLIKĀCIJA

TELPAS Nr.	TELPAS NOSAUKUMS	m ²
1	ĒDAMISTABA / VIESU ISTABA	30.00
2	KORIDORS	12.00
3	SAN. MEZGLS	3.55
4	GUĻAMISTABA	7.10
5	GUĻAMISTABA	9.50
6	PALĪGTELPA	3.95
7	VIRTUVE	6.20
8	SAUNA	3.70

KOPĀ: 76.00



TO 70.80



1. STĀVA EKSPĻĪKĀCIJA

TELPAS Nr.	TELPAS NOSAUKUMS	m ²
1	ĒDAMISTABA / VIESU ISTABA	30.00
2	KORIDORS	12.00
3	SAN. MEZGLS	3.55
4	GUĻAMISTABA	7.10
5	GUĻAMISTABA	9.50
6	PALĪGTELPA	3.95
7	VIRTUVE	6.20
8	SAUNA	3.70
9	ĢĒRBTUVE	4.40

KOPĀ: 80.40

